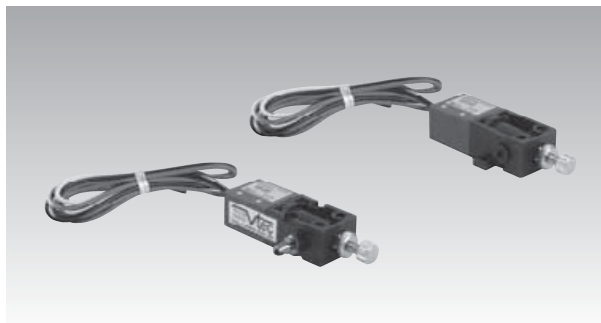


Electro-Mechanical Vacuum Switches

Features

These switches use a vacuum actuated membrane to operate a mechanical micro switch. All switches can be wired normally closed or normally open. The vacuum level to which the switch operates can be set with the manually adjustable and lockable screw. The VES-02B comes with two fixing holes molded into the housing, whereas the VES-01B comes with fixings in two extended ears.



Order no.

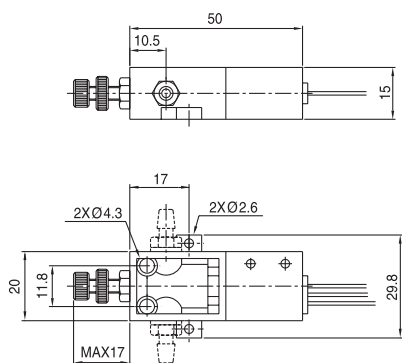
VES - 01B

① Model	② Bracket style
VES	<ul style="list-style-type: none"> ● 01B (Vacuum pump only available) 02B - 03B (Midi keyboard pump only available)

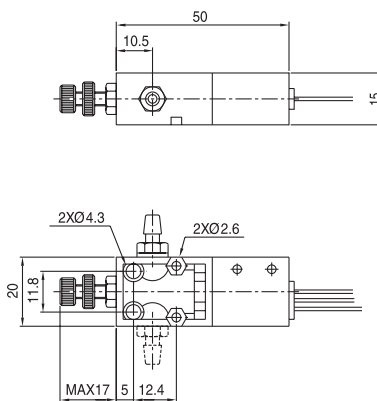
Function	Adjustable
NO / NC	<p>Black ● NC : Normally Closed (Red)</p> <p>White ● NO : Normally Open (White)</p>

Dimensional Information

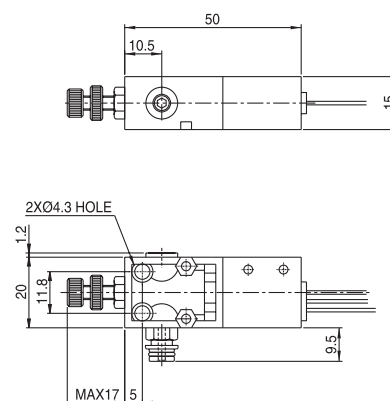
VES-01B



VES-02B



VES-03B



Operating specifications

Type	VES-01B, VES-02B, VES-03B
Fluid used	Air (non corrosive, inflammable gaseous body)
Output function	NO / NC
Pressure range (-kPa)	10-90
Hystresis,kPa	±5
Range of operating temperature (°C)	-10 ~ +80°C
Cable	3 X 0.75mm ² X 0.5m
Weight (g)	30
Operating humidity	85% RH or less
Line voltage	MAX, 250V/AC(30V/DC)
Output current Max	7A
Vacuum connection	Ø6 (Hose out diameter) or M5